



COMPANY PROFILE

CONTENTS

Corporate information

Water

Transports

Digital solutions



CORPORATE INFORMATION

About OFITECO
Business Sectors
Areas of Expertise

The background of the slide features a grayscale photograph of a large-scale construction project. On the left, a massive concrete dam with a rough, textured surface rises steeply. To the right, a large-diameter tunnel is visible, with its interior walls showing signs of excavation and construction. The overall scene conveys a sense of industrial scale and engineering expertise.

OFITECO

OFITECO is a Spanish engineering company with presence in several countries and specialized in finding solutions for the safety of hydraulic and transportation infrastructures based on the integration of instrumentation and software. With **50 years** of experience OFITECO has developed and implemented its own applications for remote monitoring and data management in real-time: **DamData**, **TunnelData**, and **BridgeData**, currently in operation in over 300 dams, urban tunnels and bridges all over the world. We generate and **analyze data** for construction, operation, maintenance, safety and risk assessment, accompanying our clients and collaborators providing **solutions** tailored to their needs.



OFITECO encompasses its activity in the SICE Technology and Systems group, which is a part of VINCI, a world leader in concessions, energy and construction, integrator of solutions and services, aimed at supporting its clients in the deployment of technologies from design to construction, operation and maintenance.

BUSINESS SECTORS



Dams and
Reservoirs



Flood Risk
Management



Bridges and
Viaducts



Roads and
Highways



Hydrometeorological
networks



River Restoration



Tunnels and
Stations



Railways and
Metro

AREAS OF EXPERTISE

CONSULTANCY AND ENGINEERING

WATER

Dams and Reservoirs
Hydro-Meteo Networks
Flood Risk
Management
Water and Sanitation
River Restoration
Irrigation

TRANSPORT

Roads and Highways
Railways
Light Rail Train
Bridges
Tunnels

WORKS SUPERVISION

WATER

Dams and Reservoirs
Hydro-Meteo Networks
Flood Risk
Management
Water and Sanitation

TRANSPORT

Roads and Highways
Railways
Light Rail Train
Bridges
Tunnels

MONITORING AND SURVEILLANCE

Dams and Reservoirs
Tunnels
Bridges
Buildings
Historical Heritage
Nuclear Power Plants

MAINTENANCE

Dams and Reservoirs
Hydro-Met Networks

Real-Time Data Monitoring Information Management Systems

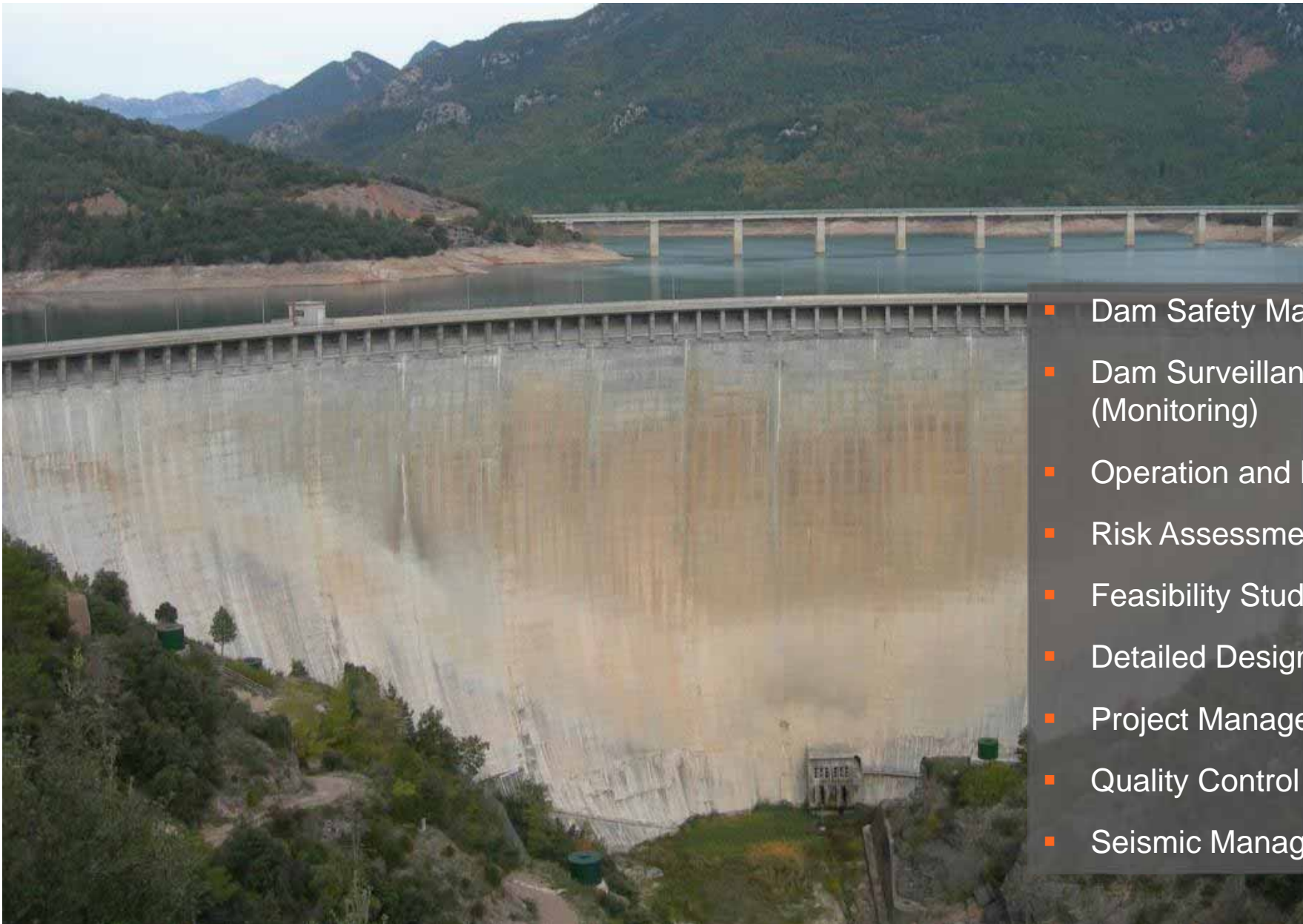
Damdata

Tunneldata

Bridgedata

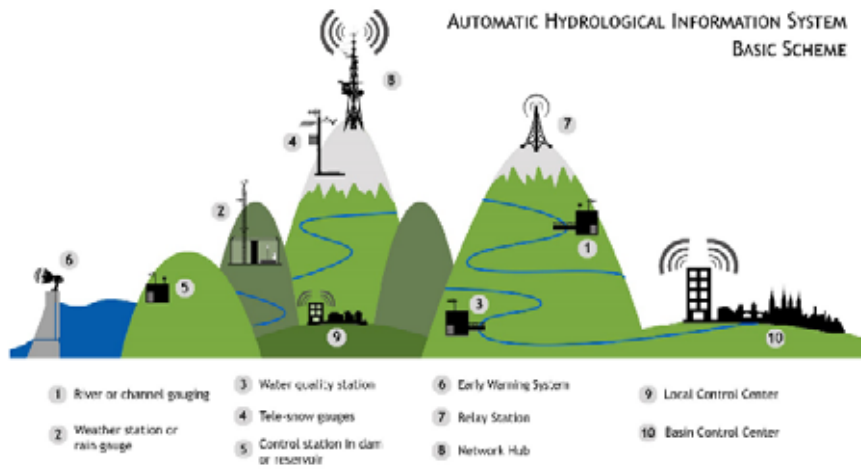
WATER

Dams and Reservoirs
Hydrometeorological Networks
Flood Risk Management
Water Supply, Treatment and Sanitation
Irrigation
River Restoration



- Dam Safety Management
- Dam Surveillance (Monitoring)
- Operation and Maintenance
- Risk Assessment & Analysis
- Feasibility Study
- Detailed Design
- Project Management
- Quality Control (Laboratory)
- Seismic Management

HYDROMETEOROLOGICAL NETWORKS



- Detailed Design & Implementation
- Works Supervision
- Hydro-meteorological forecasting
- Feasibility Studies
- Design and support in the use of Automatic Hydrological Information Systems (AHIS)
- Hydrologic and hydraulic models (1D and 2D)
- Design and implementation of Early Warning Systems (EWS) and Decision Support Systems (DSS)
- Operation and maintenance



FLOOD RISK MANAGEMENT



- Preliminary Flood Risk Assessments
- Flood Hazard and Risk mapping
- Emergency action plans
- Decision Support Systems
- Flood Early Warning Systems
- Flood Structural and Non-structural Measures Design



WATER SUPPLY, TREATMENT AND SANITATION

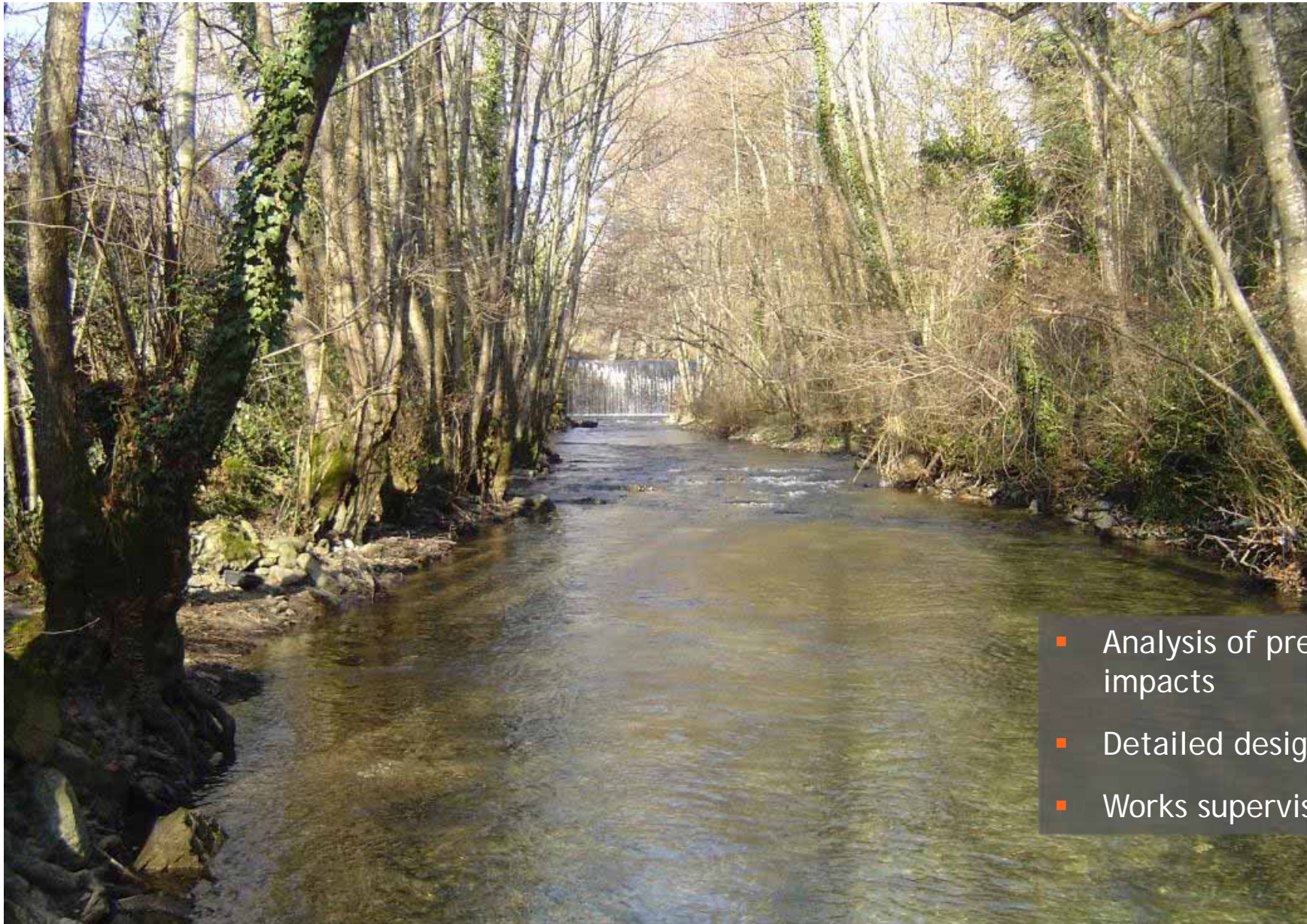


- Feasibility studies
- Detailed design
- Works supervision
- Tendering documents
- Operation & Maintenance



- Feasibility studies
- Detailed design
- Works supervision
- Management systems

RIVER RESTORATION



- Analysis of pressures and impacts
- Detailed design
- Works supervision

TRANSPORTS

Roads and Highways

Railways and Metros

Light Rail

Tunnels and Stations

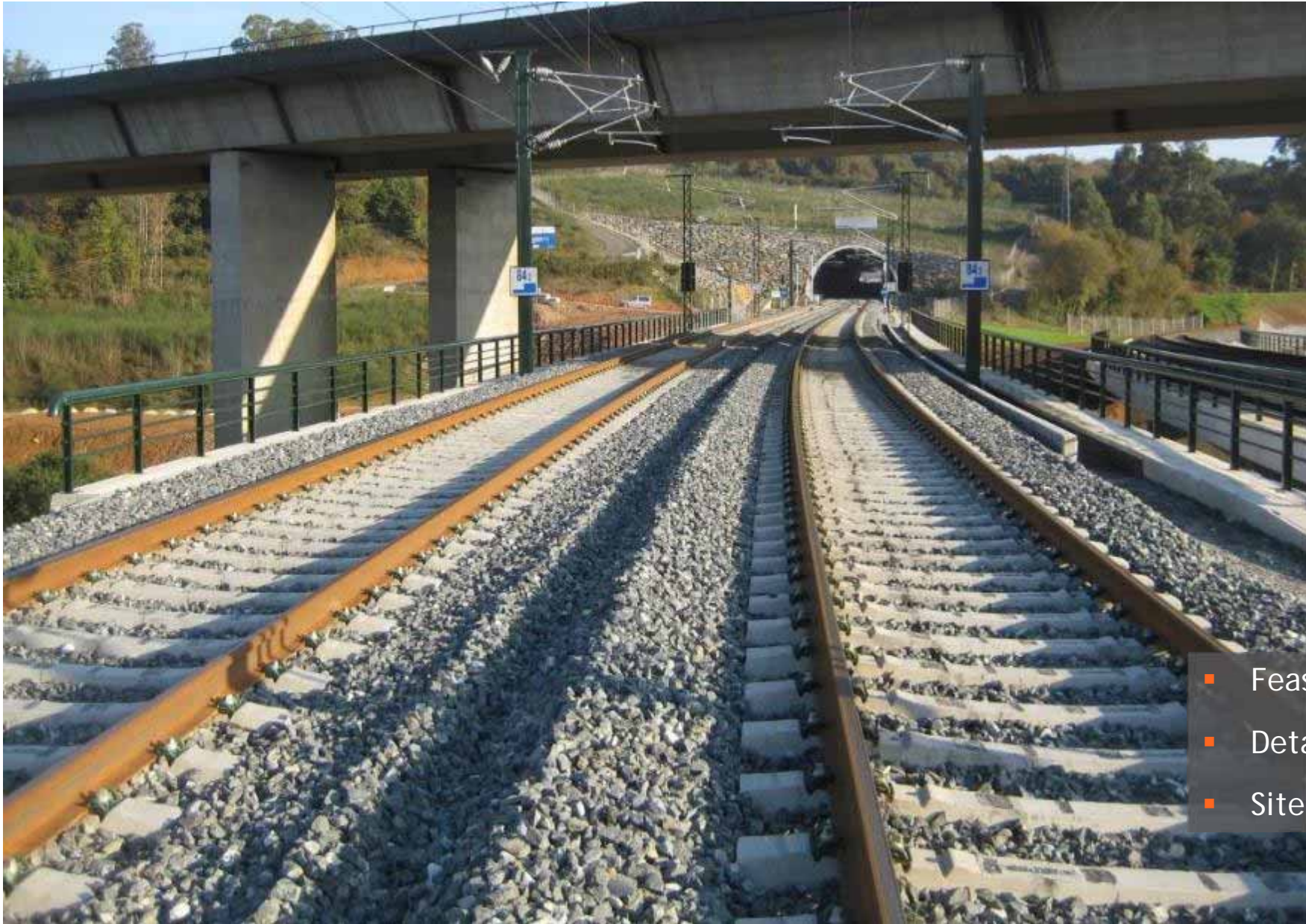
Bridges and Viaducts

ROADS AND HIGHWAYS



- Feasibility studies
- Detailed design
- Works supervision

RAILWAYS AND METROS



- Feasibility studies
- Detailed design
- Site supervision

LIGHT RAIL

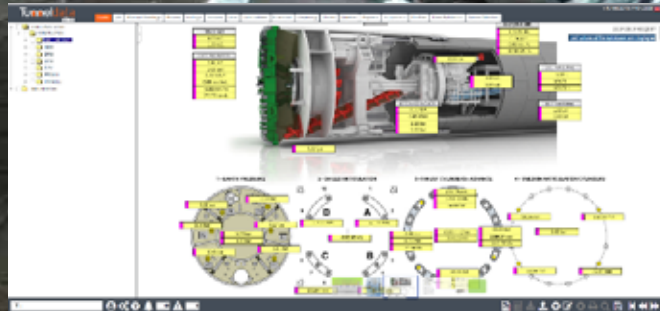


- Feasibility studies
- Detailed design
- Site supervision

TUNNELS AND STATIONS

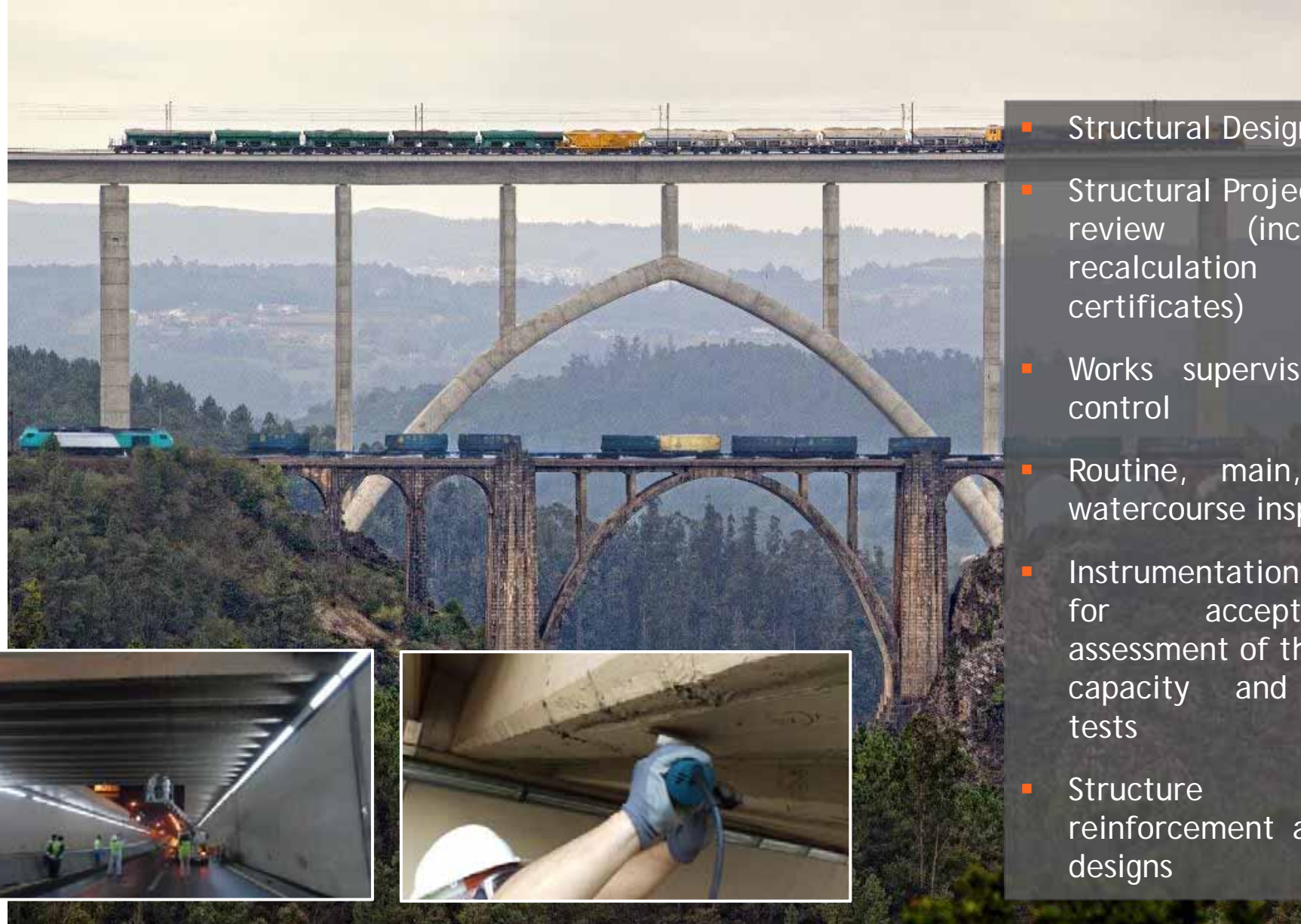


- Monitoring plan design
- Implementation
- Information management



Tunneldata

BRIDGES AND VIADUCTS



- Structural Design
- Structural Project auditing and review (including full recalculation and design certificates)
- Works supervision y quality control
- Routine, main, special and watercourse inspections
- Instrumentation and load tests for acceptance, for assessment of the load-bearing capacity and investigation tests
- Structure repair, reinforcement and adaptation designs

DIGITAL SOLUTIONS

DAMDATA, TUNNELDATA, BRIDGEDATA

A grayscale photograph of a large-scale construction project, likely a dam or a deep excavation. The image shows steep, rocky slopes and a large, curved concrete structure in the center. Several workers are visible on the slopes, providing a sense of scale. The image is faded and serves as a background for the text.

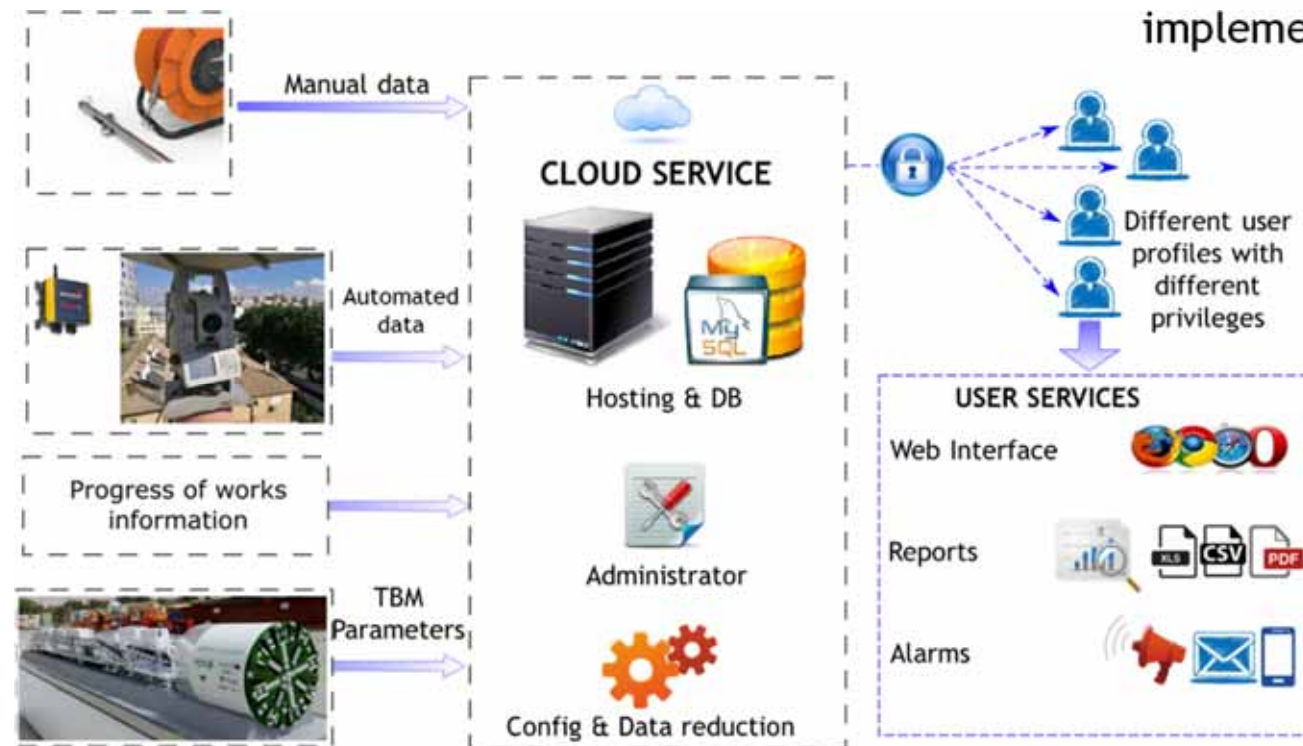
OFITECO

Damdata Tunneldata

Bridgedata

A comprehensive management system must ensure the availability of valid information for all users and locations, in order to achieve Monitoring's objectives.

DAMDATA, TUNNELDATA AND BRIDGEDATA are web applications for the integral management of monitoring data, and provides all the tools for the implementation of a monitoring plan



- Cloud-based/local server web platform
- Acquisition of automatic and manual data in a centralized database
- Flexible configuration of multivariable graphs and reports
- Real-time Alarms and Incidences, flexible definition of thresholds
- Mobile App: manual acquisition, scheduling of maintenance
- Transparent Calculation Tool, independent of sensor manufacturer
- Real-time SCADA View
- Statistical Model: analysis of correlated variables and prognosis
- Emergency Action Plans. Management of heightened surveillance and early warning systems

THANK YOU

Any question?



www.ofiteco.com



ofiteco@ofiteco.com



(+34) 91 535 22 10



OFITECO